



**EUROPEAN COMMISSION**  
DIRECTORATE-GENERAL FOR HEALTH AND FOOD SAFETY

Safety of the Food Chain  
**Plant health**

Brussels, 27 July 2017

**List of demarcated areas established in the Union territory for the presence  
of *Xylella fastidiosa* as referred to in Article 4(1) of Decision (EU) 2015/789**

**- UPDATE 8 -**

Pursuant to Article 4(4) of Commission Implementing Decision (EU) 2015/789, the following demarcated areas are established by the Member States concerned for the presence of *Xylella fastidiosa* as referred to in Article 4(1) of that Decision.

Demarcated areas (infected zone and buffer zone) subject to eradication measures pursuant to Article 6 of Decision (EU) 2015/789

- Municipalities listed in Section I and Section II, located in some parts of **France** (Corsica and Provence-Alpes-Côte d'Azur), partially or entirely affected by a demarcated area established for the presence of *X. fastidiosa* subsp. *multiplex*;
- Municipalities listed in Section III and Section IV, located in some parts of **France** (Provence-Alpes-Côte d'Azur), partially or entirely affected by the demarcated area established for the presence of *X. fastidiosa* subsp. *pauca*;
- Municipalities listed in Section V and Section VI, located in **Germany** (Saxony and Thuringia), partially or entirely affected by the demarcated area established for the presence of *X. fastidiosa* subsp. *fastidiosa*;
- Municipalities listed in Section VII and Section VIII, located in **Spain** (Balearic Islands), partially or entirely affected by the demarcated area established for the presence of *X. fastidiosa*;
- Municipalities listed in Section IX and Section X, located in **Spain** (Valencian Community), partially or entirely affected by the demarcated area established for the presence of *X. fastidiosa* subsp. *multiplex*;

Infected zone subject to containment measures pursuant to Article 7 of Decision (EU) 2015/789

- Municipalities listed in Section XI and Section XII, located in **Italy** (Apulia), and partially or entirely affected by the demarcated area established for the presence of *X. fastidiosa* subsp. *pauca*.

**I. FRANCE - Municipalities affected partially or entirely by the demarcated areas established in the French territory for the presence of *X. fastidiosa* subsp. *multiplex***

**CORSICA**

AFA  
AGHIONE  
AJACCIO  
ALATA  
ALBITRECCIA  
ALERIA  
ALGAJOLA  
ALTAGENE  
AMBIEGNA  
ANTISANTI  
APPIETTO  
ARBELLARA  
ARBORI  
AREGNO  
ARGIUSTA-MORICCIO  
ARRO  
AULLENE  
AVAPESSA  
AZILONE-AMPAZA  
AZZANA  
BALOGNA  
BARBAGGIO  
BASTELICA  
BASTELICACCIA  
BASTIA  
BELGODERE  
BELVEDERE-CAMPOMORO  
BIGUGLIA  
BILIA  
BOCOGNANO  
BONIFACIO  
BORGO  
CALABRIVA  
CALCATOGGIO  
CALENZANA  
CALVI  
CAMPO  
CANNELLE  
CARBINI  
CARBUCCIA  
CARDO-TORGIA  
CARGESE  
CARGIACA  
CASAGLIONE  
CASALABRIVA  
CATERI  
CAURO  
COGGIA  
COGNOCOLI-MONTICCHI

CONCA  
CORBARA  
COSTA  
COTI-CHIAVARI  
CRISTINACCE  
CUTTOLI-CORTICCHIATO  
ECCICA-SUARELLA  
EVISA  
FARINOLE  
FELICETO  
FIGARI  
FOCE  
FORCIOLO  
FOZZANO  
FRASSETO  
FURIANI  
GALERIA  
GHISONACCIA  
GIUNCAGGIO  
GIUNCHETO  
GRANACE  
GROSSA  
GROSSETO-PRUGNA  
GUAGNO  
GUARGUALE  
LAVATOGGIO  
LECCI  
LETIA  
LEVIE  
LOPIGNA  
LORETO-DI-TALLANO  
LUCCIANA  
LUGO-DI-NAZZA  
LUMIO  
L'ILE ROUSSE  
MANSO  
MARIGNANA  
MELA  
MOCA-CROCE  
MONACIA-D'AULLENE  
MONCALE  
MONTEGROSSO  
MONTICELLO  
MURATO  
MURO  
MURZO  
NESSA  
OCANA  
OCCHIATANA  
OLETTA  
OLIVESE  
OLMETA-DI-TUDA

OLMETO  
OLMI CAPPELLA  
OLMICCIA  
OSANI  
OTA  
PALASCA  
PARTINELLO  
PASTRICCIOLA  
PATRIMONIO  
PERI  
PETRETO-BICCHISANO  
PIANA  
PIANOTTOLI-CALDARELLO  
PIETROSELLA  
PIETROSO  
PIEVE  
PIGNA  
PILA-CANALE  
PIOGGIOLO  
POGGIO-DI-NAZZA  
POGGIO-D'OLETTA  
POGGIOLO  
PORTO-VECCHIO  
PROPRIANO  
PRUNELLI-DI-FIUMORBO  
QUASQUARA  
QUENZA  
RAPALE  
RENNO  
REZZA  
ROSAZIA  
RUTALI  
SAINTE-LUCIE-DE-TALLANO  
SAINT-FLORENT  
SALICE  
SAN-GAVINO-DI-CARBINI  
SAN-MARTINO-DI-LOTA  
SANTA-MARIA-FIGANIELLA  
SANTA-MARIA-SICHE  
SANT'ANDREA-D'ORCINO  
SANT'ANTONINO  
SANTA-REPARATA-DI-BALAGNA  
SARI-D'ORCINO  
SARI-SOLENZARA  
SARROLA-CARCOPINO  
SARTENE  
SCOLCA  
SERRA-DI-FERRO  
SERRA-DI-FIUMORBO  
SERRA-DI-SCOPAMENE  
SERRIERA  
SOLLACARO  
SORBOLLANO  
SOTTA  
SPELONCATO

TALLONE  
TAVACO  
TAVERA  
TOLLA  
UCCIANI  
URBALACONE  
VALLECALLE  
VALLE-DI-MEZZANA  
VERO  
VEZZANI  
VICO  
VIGGIANELLO  
VIGNALE  
VILLANOVA  
VILLE DI PARASO  
VILLE-DI-PIETRABUGNO  
ZERUBIA  
ZIGLIARA  
ZILIA  
ZONZA  
ZOZA

**PROVENCE-ALPES-CÔTE  
D'AZUR (PACA)**

ANTIBES  
ASPREMONT  
AURIBEAU-SUR-SIAGNE  
BANDOL  
BEAUSOLEIL  
BEZAUDUN-LES-ALPES  
BIOT  
BLAUSASC  
CAGNES-SUR-MER  
CANNES  
CANTARON  
CAP-D'AIL  
CARROS  
CASTAGNIERS  
CASTELLAR  
CASTILLON  
CHATEAUNEUF-GRASSE  
CHATEAUNEUF-VILLEVIELLE  
COLOMARS  
EZE  
EVENOS  
FALICON  
FAUCON  
FREJUS  
GATTIERES  
GORBIO  
GRASSE  
LA COLLE-SUR-LOUP  
LA GAUDE  
LA GARDE

LA ROQUETTE-SUR-SIAGNE  
LA SEYNE-SUR-MER  
LA TRINITE  
LA TURBIE  
LA VALETTE-DU-VAR  
LE BAR-SUR-LOUP  
LE BEAUSSET  
LE BROC  
LE CANNET  
LE CASTELLET  
LE PRADET  
LE REVEST-LES-EAUX  
LE ROURET  
LE TIGNET  
LES ADRETS-DE-L'ESTEREL  
MANDELIEU-LA-NAPOULE  
MENTON  
MOUANS-SARTOUX  
MOUGINS  
NICE  
OLLIOULES  
OPIO  
PEGOMAS  
PEILLE  
PEILLON  
PEYMEINADE  
ROQUEBRUNE-CAP-MARTIN  
ROQUEFORT-LES-PINS  
SAINT-ANDRE-DE-LA-ROCHE  
SAINT-BLAISE

SAINTE-AGNES  
SAINT-JEANNET  
SAINT-LAURENT-DU-VAR  
SAINT-MANDRIER-SUR-MER  
SAINT-MARTIN-DU-VAR  
SAINT-PAUL  
SAINT PAUL DE VENCE  
SAINT-RAPHAEL  
SANARY-SUR-MER  
SIX-FOURS-LES-PLAGES  
SOSPEL  
TANNERON  
THEOULE-SUR-MER  
TOULON  
TOURRETTE-LEVENS  
TOURRETTES-SUR-LOUP  
VALBONNE  
VALLAURIS  
VENCE  
VILLEFRANCHE-SUR-MER  
VILLENEUVE-LOUBET

**ITALY (LIGURIA)**

OLIVETTA SAN MICHELE  
VENTIMIGLIA

**PRINCIPALITY OF MONACO**

MONACO

**II. FRANCE - Municipalities affected partially or entirely by the infected zones established in the French territory for the presence of *X. fastidiosa* subsp. *multiplex***

**CORSICA**

AFA  
AJACCIO  
ALATA  
ALBITRECCIA  
AMBIGNA  
APPIETTO  
ARRO  
BASTELICACCIA  
BELVEDERE-COMPOMORO  
BIGUGLIA  
BONIFACIO  
CALCATOGGIO  
CALVI  
CARGESE  
CASAGLIONE  
CASALABRIVA  
CAURO  
COTI-CHIAVARI  
COGGIA  
CONCA  
CUTTOLI-CORTICCHIATO  
ECCICA SUARELLA  
FIGARI  
FOZZANO  
FURIANI  
GHISONACCIA  
GROSSA  
GROSSETO-PRUGNA  
LECCI  
LORETO-DI-TALLANO  
LUMIO  
MONACIA-D'AULLENE  
OCANA  
OLMETO  
OLMICCIA  
OTAPERI

OSANI  
PIANA  
PIANOTTOLI-CALDARELLO  
PIETROSELLA  
PILA-CANALE  
PORTO-VECCHIO  
PROPRIANO  
SAINTE-LUCIE-DE-TALLANO  
SANT'ANDREA D'ORCINO  
SANTA-MARIA-FIGANELLA  
SANTA REPARATA DI BALAGNA  
SAN GAVINO DI CARBINI  
SARROLA-CARCOPINO  
SARTENE  
SERRA-DI-FERRO  
SOLLACARO  
VERO  
VICO  
VIGGIANELLO  
VILLANOVA  
ZONZA

**PROVENCE ALPES COTE  
D'AZUR (PACA)**

ANTIBES  
BIOT  
LA SEYNE SUR MER  
MANDELIEU-LA-NAPOULE  
MENTON  
MOUGINS  
NICE  
THEOULE-SUR-MER  
SAINT-LAURENT-DU-VAR  
VILLENEUVE LOUBET

**III. FRANCE - Municipalities affected partially or entirely by the infected zone established in the French territory for the presence of *X. fastidiosa* subsp. *pauca***

MENTON

**IV. FRANCE - Municipalities affected partially or entirely by the demarcated area established in the French territory for the presence of *X. fastidiosa* subsp. *pauca***

BEAUSOLEIL

BLAUSASC

CAP-D'AIL

CASTELLAR

CASTILLON

EZE

GORBIO

LA TRINITE

LA TURBIE

MENTON

PEILLE

PEILLON

ROQUEBRUNE-CAP-MARTIN

SAINTE-AGNES

SOSPEL

**V. GERMANY - Municipalities affected partially or entirely by the demarcated area established in the German territory for the presence of *X. fastidiosa* subsp. *fastidiosa***

**SAXONY:**

PAUSA-MÜHLENTROFF  
ROSENBACH  
PLAUEN  
REUTH  
WEISCHLITZ  
ELSTERBERG  
PÖHL

HOHNDORF  
KIRSCHKAU  
KLEINWOLSCHEWENDORF  
LANGENBUCH  
LANGENWOLSCHEWENDORF  
LÄWITZ  
LEITLITZ

**THURINGIA:**

ARNSGRÜN  
BERNSGRÜN  
BÜNA  
COSSENGRÜN  
DOBIA  
DRÖSWEIN  
ERBENGRÜN  
EUBENBERG  
FÖRTHEN  
FROTSCHAU  
GABLAU-LEININGEN  
GÖSCHITZ  
GÖTTENDORF

LÖHMA  
LÖSSAU  
NIEDERBÖHMERSDORF  
PAHREN  
PANSDORF  
PÖLLWITZ  
SCHLEIZ  
SCHÖNBACH  
SCHÖNBRUNN  
STELZENDORF  
UNTERKOSKAU  
WECKERSDORF  
WELLSDORF  
WOLFSHAIN  
ZEULENRODA

**VI. GERMANY - Municipalities affected partially or entirely by the infected zone established in the German territory for the presence of *X. fastidiosa* subsp. *fastidiosa***

**SAXONY**

PAUSA-MÜHLTROFF



**VII. SPAIN - Municipalities affected partially or entirely by the demarcated area established in the Spanish territory for the presence of *X. fastidiosa***

**BALEARIC ISLANDS**

*ENTIRE TERRITORY*

**VIII. SPAIN – Municipalities affected partially or entirely by the infected zone established in the Spanish territory for the presence of *X. fastidiosa***

**BALEARIC ISLANDS**

MALLORCA

ALARO  
ALCUDIA  
ALGAIDA  
ARTA  
BINISSALEM  
BUNYOLA  
CAMPANET  
CAMPOS  
INCA  
LLUBI  
LLUCMAJOR  
MANACOR  
MARIA DE LA SALUT  
MARRATXI  
PALMA DE MALLORCA  
SES SALINES  
SOLLER  
SON SERVERA  
SANTA MARGALIDA  
SANTA MARIA DEL CAMÍ  
SANTANYÍ  
SELVA  
VILLAFRANCA DE BONANY  
SENCELLESSANT LLORENÇ DES CARDESSAR  
PORRERES  
POLLENÇA  
PETRA

IBIZA

EIVISSA  
SANT ANTONI DE PORTMANY  
SANT JOSEP DE SA TALAIA  
SANT JOAN DE LABRITJA  
SANT LLUÍS  
SANTA EULÀRIA DES RIU

MENORCA

ALAIOR  
CIUTADELLA  
FERRERIES  
MAÓ  
ES CASTELL  
ES MIGJORN GRAN

- IX. Municipalities located in Spain (Valencian Community), partially or entirely affected by the demarcated area established for the presence of *X. fastidiosa* subsp. *multiplex*;**

**VALENCIAN COMMUNITY**

BENIARDÁ  
BENIDORM  
BENIFATO  
BENIGEMBLA  
BENIMANTELL  
BOLULLA  
CALLOSA D'EN SARRIÀ  
CASTELL DE CASTELLS  
CASTELL DE GUADALEST  
CONFRIDES  
EL CASTELL DE GUADALEST  
FACHECA  
FAMORCA  
FINESTRAT  
LA NUCIA  
LA VALL DE LAGUAR  
L'ALFÀS DEL PI  
ORXETA  
POLOP  
QUATRETONDETA  
SELLA  
TÀRBENA

- X. Municipalities located in Spain (Valencian Community), partially or entirely affected by the infected zone established for the presence of *X. fastidiosa* subsp. *multiplex*;**

**VALENCIAN COMMUNITY**

BENIMANTELL  
CASTELL DE GUADALEST

**XI. ITALY - Municipalities affected partially or entirely by the demarcated area established in the Italian territory for the presence of *X. fastidiosa* subsp. *pauca***

**APULIA**

AVETRANA

BRINDISI

CAROVIGNO

CAROSINO

CEGLIE MESSAPICA

CELLINO SAN MARCO

CISTERNINO

CRISPIANO

ERCHIE

*ENTIRE PROVINCE OF LECCE (ALL MUNICIPALITIES)*

FAGGIANO

FASANO

FRAGAGNANO

FRANCAVILLA FONTANA

GROTTAGLIE

LATIANO

LEPORANO

LIZZANO

MANDURIA

MARTINA FRANCA

MARUGGIO

MESAGNE

MONTEIASI

MONTEMESOLA

MONTEPARANO

ORIA

OSTUNI

PULSANO

ROCCAFORZATA

SAN DONACI

SAN GIORGIO IONICO

SAN MARZANO DI SAN GIUSEPPE

SAN MICHELE SALENTINO

SAN PANCRAZIO SALENTINO

SAN PIETRO VERNOTICO

SAN VITO DEI NORMANNI

SAVA

STATTE

TARANTO

TORCHIAROLO

TORRE SANTA SUSANNA

TORRICELLA

VILLA CASTELLI

**XII. ITALY - List of municipalities affected partially or entirely by the infected zone established in the Italian territory for the presence of *X. fastidiosa* subsp. *pauca***

**APULIA**

AVETRANA

BRINDISI

CAROSINO

CAROVIGNO

CEGLIE MESSAPICA

CELLINO SAN MARCO

ERCHIE

*ENTIRE PROVINCE OF LECCE*

(ALL MUNICIPALITIES)

FAGGIANO

FRAGAGNANO

FRANCAVILLA FONTANA

GROTTAGLIE

LATIANO

LEPORANO

LIZZANO

MANDURIA

MARTINA FRANCA

MARUGGIO

MESAGNE

MONTEIASI

MONTEPARANO

ORIA

OSTUNI

PULSANO

ROCCAFORZATA

SAN GIORGIO IONICO

SAN DONACI

SAN MARZANO DI SAN

GIUSEPPE

SAN MICHELE SALENTINO

SAN PANCRAZIO SALENTINO

SAN PIETRO VERNOTICO

SAN VITO DEI NORMANNI

SAVA

TARANTO

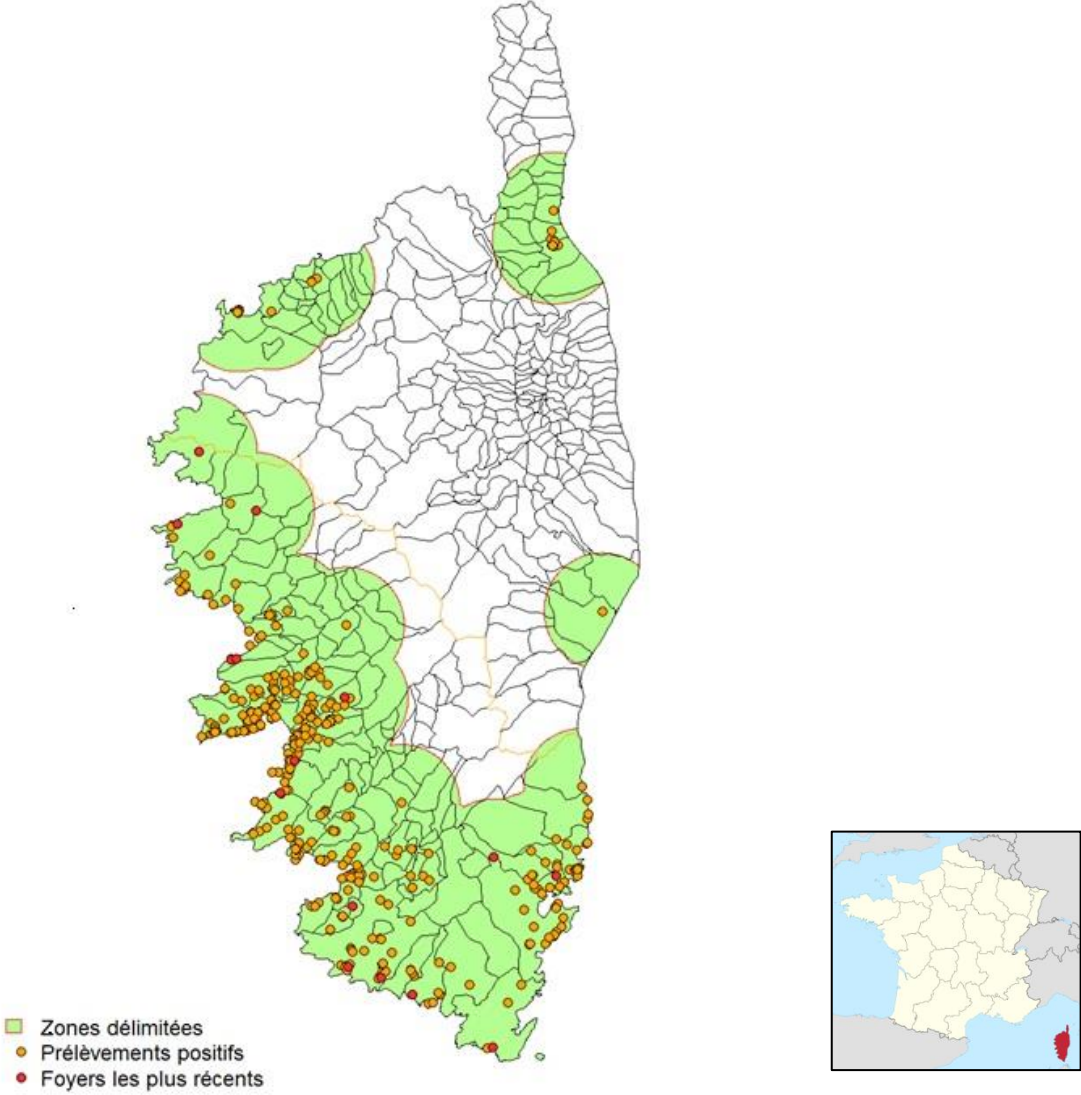
TORRICELLA

TORCHIAROLO

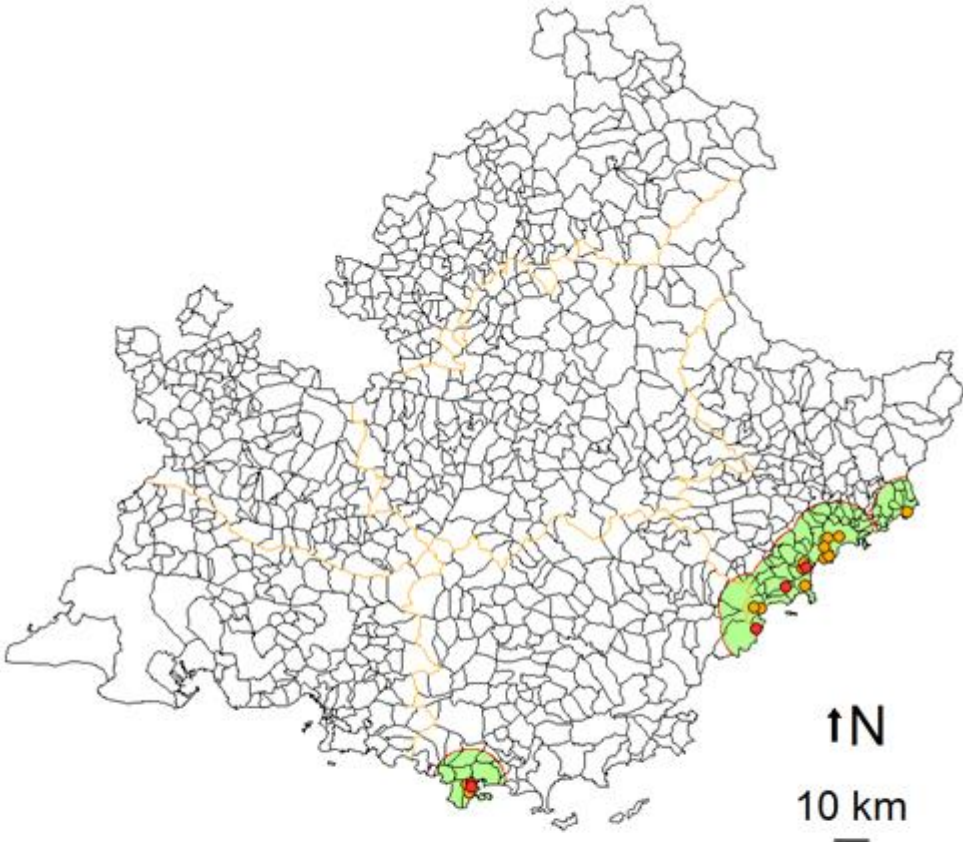
TORRE SANTA SUSANNA

VILLA CASTELLI

**Map of Demarcated Areas established in Corsica (France)**



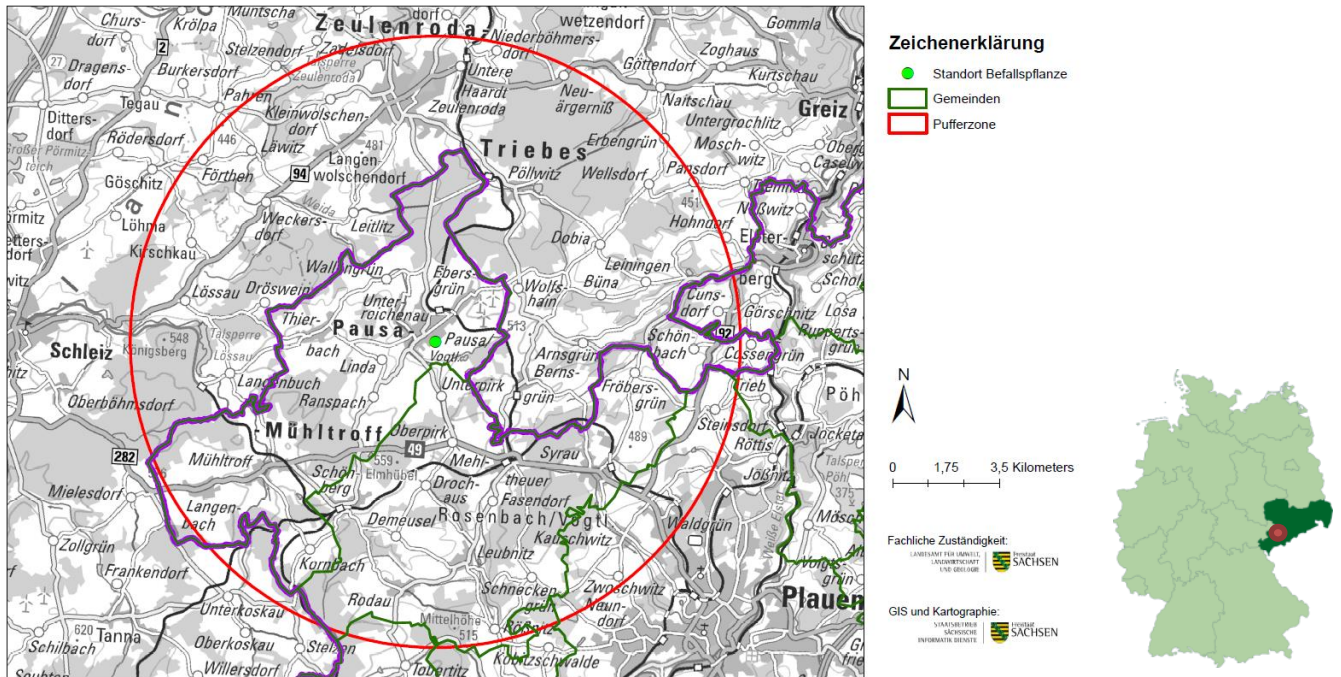
**Map of Demarcated Areas established in Provence-Alpes-Côte d'Azur (France)**



- Zones délimitées
- Prélèvements positifs
- Foyers les plus récents

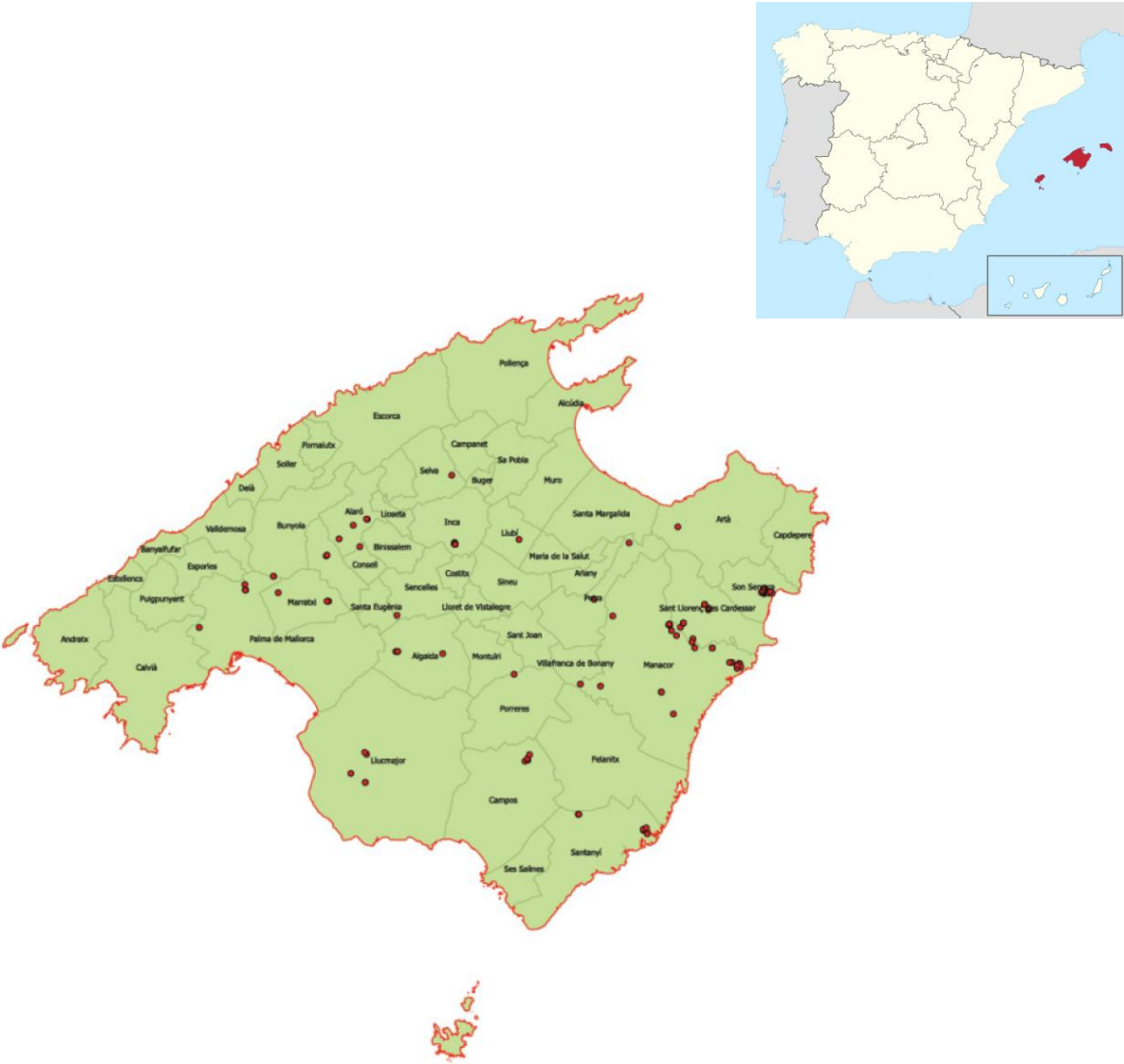


## Map of the Demarcated Area established between Saxony and Thuringia (Germany)



Map of the outbreaks detected in the Demarcated Area of Baleares (Spain)

MALLORCA

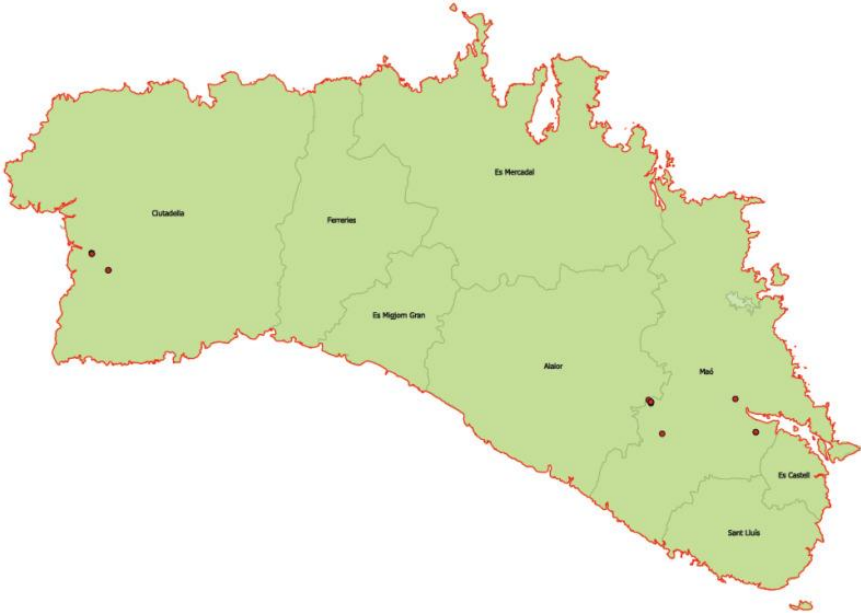




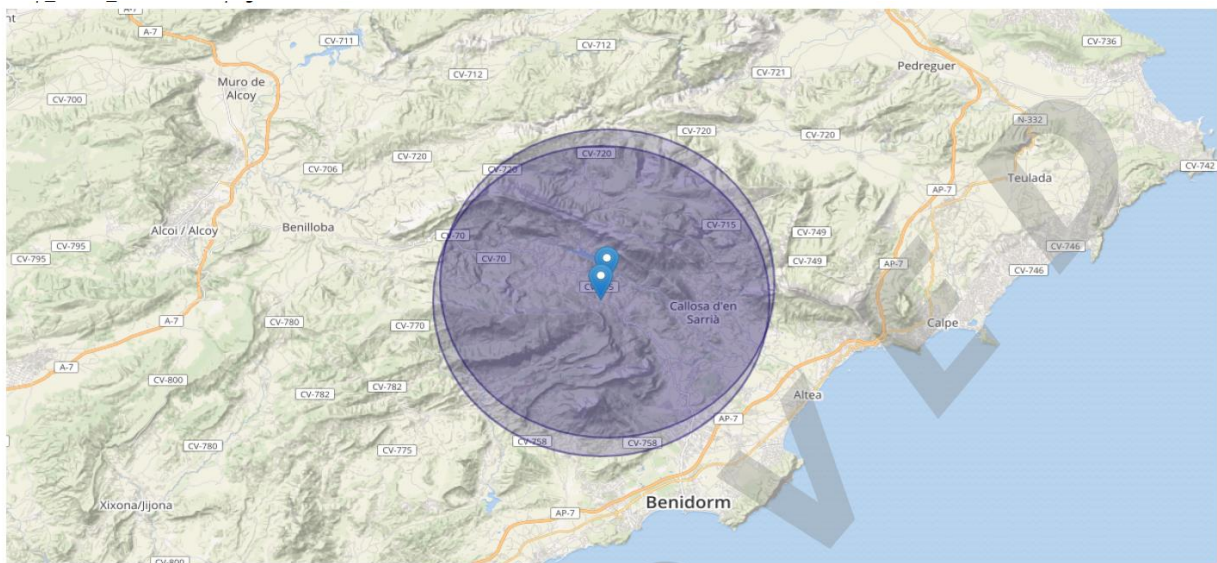
# IBIZA



**MENORCA**



## Map of the Demarcated Area established in the Valencian Community (Spain)



**Map of the Demarcated Area established in Apulia (Italy)**

